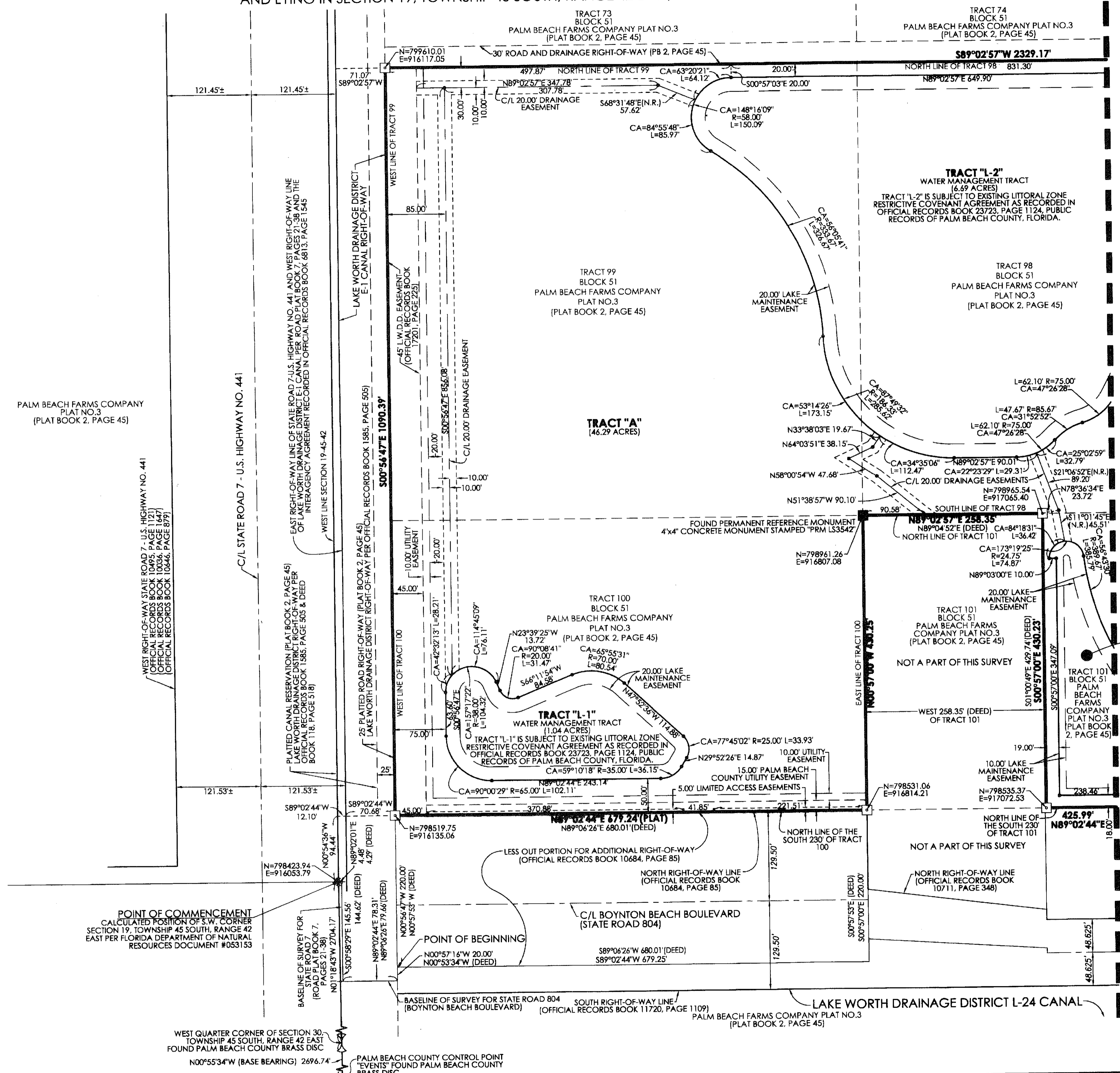


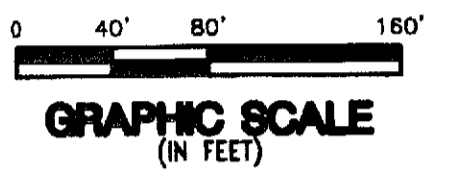
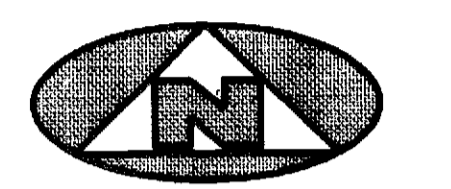
BETHESDA WEST HOSPITAL MUPD

74

BEING A REPLAT OF ALL OF TRACTS 96, 97, 98, AND 99, TOGETHER WITH PORTIONS OF TRACTS 100, 101, 102, AND 103, BLOCK 51, PALM BEACH FARMS COMPANY PLAT NO. 3, RECORDED IN PLAT BOOK 2, PAGE 45, PUBLIC RECORDS, PALM BEACH COUNTY, FLORIDA, AND LYING IN SECTION 19, TOWNSHIP 45 SOUTH, RANGE 42 EAST, PALM BEACH COUNTY, FLORIDA



FOR MATCH SEE SHEET 3 OF 3

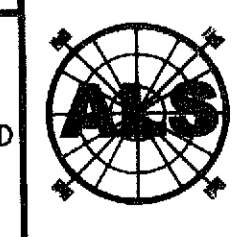


LEGEND

	DENOTES A SET PERMANENT REFERENCE MONUMENT 4"x4" CONCRETE MONUMENT WITH DISK STAMPED LB 7344	CA	CENTRAL ANGLE
	DENOTES A FOUND PERMANENT REFERENCE MONUMENT	C/L	CENTERLINE
		R	RADIUS
		(N.R.)	NOT RADIAL
		L	ARC LENGTH
		N	DENOTES A NORTHING AND EASTING COORDINATE

SURVEYOR'S NOTES

- THE BEARING BASIS (BASE BEARING) AS SHOWN HEREON, IS BASED ON THE STATE PLANE GRID AZIMUTH BEARING OF NORTH 00° 55' 34" WEST, ALONG THE CONTROL LINE BETWEEN PALM BEACH COUNTY CONTROL POINT "EVENTS" AND THE WEST QUARTER CORNER OF SECTION 30, TOWNSHIP 45 SOUTH, RANGE 42 EAST, AS SHOWN HEREON, AND ALL OTHER BEARINGS ARE RELATIVE THERETO.
2. LINES THAT INTERSECT CURVES ARE RADIAL UNLESS OTHERWISE NOTED.
3. THIS INSTRUMENT WAS PREPARED BY STEPHEN L. SHIRLEY, PROFESSIONAL SURVEYOR AND MAPPER NO. 3918, IN AND FOR THE OFFICES OF ASSOCIATED LAND SURVEYORS, INC., 4152 WEST BLUE HERON BOULEVARD, SUITE 121, RIVIERA BEACH, FLORIDA, 33404
4. THE COORDINATES SHOWN HEREON ARE STATE PLANE GRID COORDINATES ACCORDING TO THE TRANSVERSE MERCATOR PROJECTION OF THE FLORIDA EAST ZONE, N.A.D. 1983, PER THE 1990 ADJUSTMENT.
5. THE GROUND DISTANCE TO GRID DISTANCE SCALE FACTOR IS 1.000018617 (GROUND DISTANCE x SCALE FACTOR = GRID DISTANCE)
6. THE LINEAR DIMENSIONS SHOWN HEREON ARE GROUND DISTANCES IN U.S. FEET AND DECIMAL PARTS THEREOF.



ASSOCIATED LAND SURVEYORS, INC.
 4152 W. BLUE HERON BOULEVARD—SUITE 121
 RIVIERA BEACH, FLORIDA 33404 LB 7344
 PHONE: (561) 848-2102 FAX: (561) 844-9659 EMAIL: als@alsurvey.net

FILE: P314-Plat.dwg
SCALE: 1"=80'
DWN: KVC
WO.NO.: P314
SHEET 2 OF 3